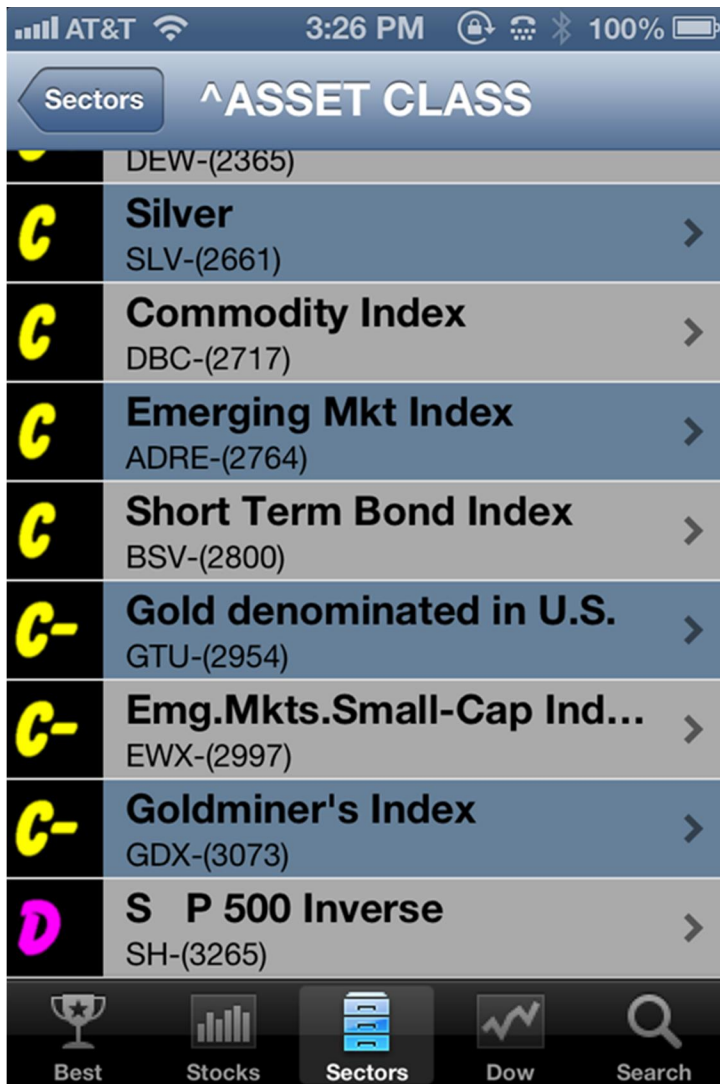




April 15, 2013      The password for this week's newsletter archives on my website is (subscribers & clients only)

## ***All that Glitters is not Gold...***

My **Best Stocks Now App** has been telling us for months that Gold is one of the WORST asset classes to be invested in.



**Data from Best Stocks Now App**

How important is this information?

**GLD SPDR Gold Trust Shares NYSE**

© StockCharts.com

12-Apr-2013 **Open** 148.65 **High** 148.85 **Low** 143.43 **Close** 143.95 **Volume** 55.6M **Chg** -7.10 (-4.70%) ▼



Ouch! Gold is hitting new lows, while domestic equities are hitting new highs!

**\$SPX S&P 500 Large Cap Index INDXX**

© StockCharts.com

12-Apr-2013 **Open** 1593.30 **High** 1593.30 **Low** 1579.97 **Close** 1588.85 **Volume** 2.2B **Chg** -4.52 (-0.28%) ▼



**New ALL-TIME highs!**

What has the Best Stocks Now App been saying about domestic equities?



They have been the very best place to be invested.

What is my app saying about the asset classes this week?

Top 8 Last Week



Top 8 This Week



#9-16 this week.



Domestic equities are still the best place to be.

What are the worst places to be invested?

### Bottom 8 Ranked Last Week

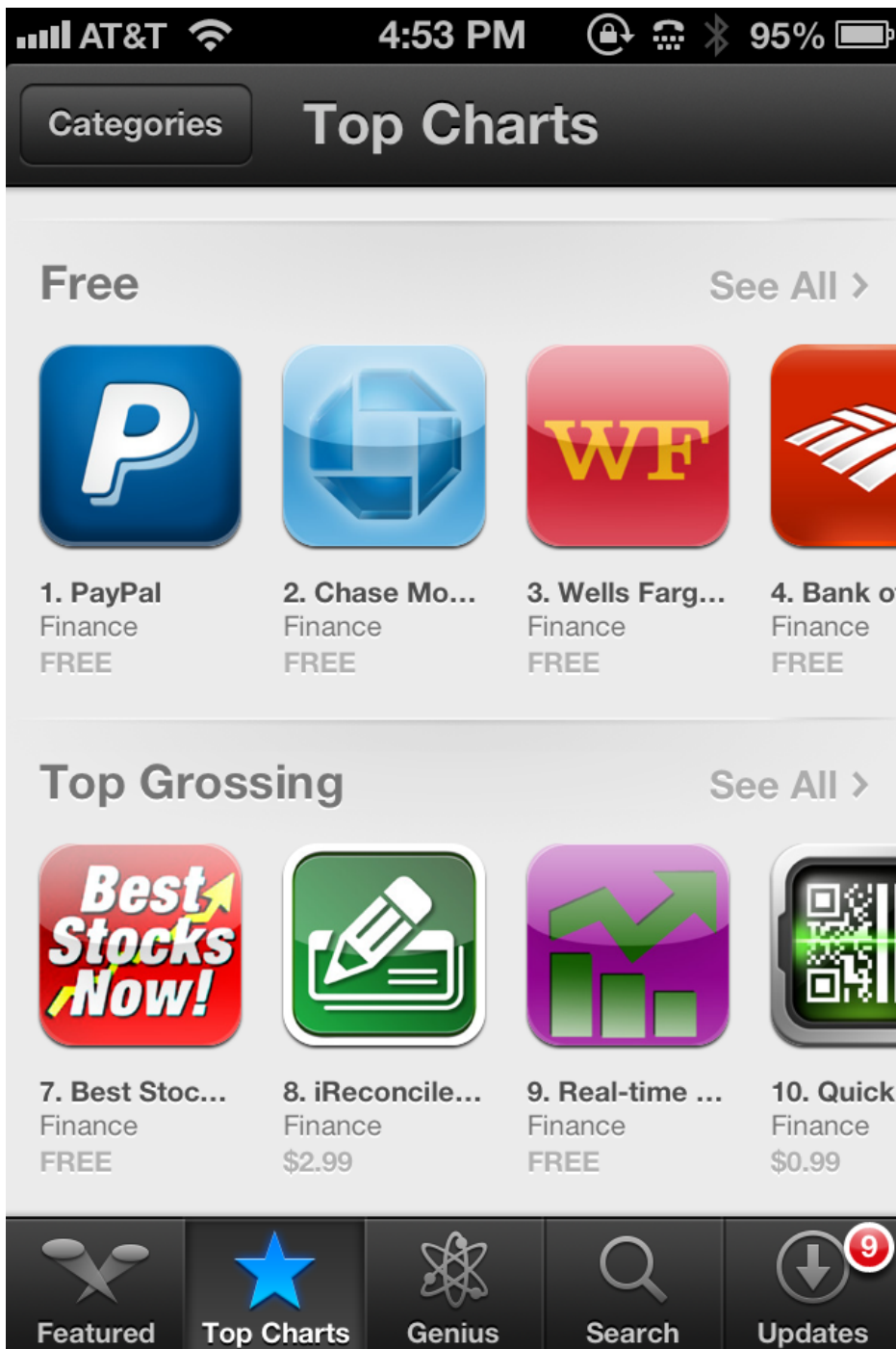
Rating	Asset Class	Ticker
	DEW	(2365)
C	Silver	SLV-(2661)
C	Commodity Index	DBC-(2717)
C	Emerging Mkt Index	ADRE-(2764)
C	Short Term Bond Index	BSV-(2800)
C-	Gold denominated in U.S.	GTU-(2954)
C-	Emg.Mkts.Small-Cap Ind...	EWX-(2997)
C-	Goldminer's Index	GDX-(3073)
D	S P 500 Inverse	SH-(3265)

### Bottom 8 Ranked This Week

Rating	Asset Class	Ticker
	ADRE	(2776)
C	Short Term Bond Index	BSV-(2826)
C	Gold Bullion	GLD-(2830)
C	Commodity Index	DBC-(2857)
C	Silver	SLV-(2914)
C-	Emg.Mkts.Small-Cap Ind...	EWX-(3005)
D+	Gold denominated in U.S.	GTU-(3198)
D+	Goldminer's Index	GDX-(3228)
D	S P 500 Inverse	SH-(3297)

Being short the market is still the worst place to be. Gold, emerging markets, cash, and silver are also still bad places to be invested.

By the way, my Best Stocks Now App has been as high as the seventh highest grossing financial app in the world recently:



Now that we know that domestic equities are still the best place to be, let's take a look at this week's top sectors:

**Top 8 Last Week**

**Top 8 This Week**

**#9-16 This Week.**



There was very little change at the top once again this week. Here are this week's worst sectors:

**Bottom 8 Last Week**



**Bottom 8 This Week**



**Bottom 9-16 this week**



Once again, there was very little change from last week.

Here is how the markets fared for the week:

<b>Asset Class</b>	<b>Fri. 4/5/13 Close</b>	<b>Fri. 4/12/13 Close</b>	<b>Week Change</b>	<b>Week Pct. Change</b>
<b>S&amp;P500</b>	1553.28	1588.85	<b>35.57</b>	<b>2.29%</b>
<b>DJIA</b>	14,464.94	14,865.21	<b>400.27</b>	<b>2.77%</b>
<b>NASD</b>	3203.86	3294.95	<b>91.09</b>	<b>2.84%</b>
<b>S&amp;P600 (Small)</b>	517.47	526.64	<b>9.17</b>	<b>1.77%</b>
<b>S&amp;P400 (Mid-Cap)</b>	1123.94	1149.23	<b>25.29</b>	<b>2.25%</b>
<b>Total World Stock Index</b>	51.69	52.84	<b>1.15</b>	<b>2.22%</b>
<b>Emg. Mkts (VWO)</b>	41.97	42.33	<b>0.36</b>	<b>0.86%</b>
<b>Em Mkt Sm. Cap (DGS)</b>	50.80	51.15	<b>0.35</b>	<b>0.69%</b>
<b>Europe (EFA)</b>	58.75	60.43	<b>1.68</b>	<b>2.86%</b>
<b>China (FXI)</b>	35.64	36.00	<b>0.36</b>	<b>1.01%</b>
<b>Latin America (ILF)</b>	42.94	43.64	<b>0.70</b>	<b>1.63%</b>
<b>U.S. 10yr. Tr.</b>	1.69%	1.72%	<b>0.03%</b>	<b>-1.78%</b>
<b>Greece 10yr. Bond</b>	12.02%	11.67%	<b>-0.35%</b>	<b>2.91%</b>
<b>Italy 10yr. Bond</b>	4.57%	4.37%	<b>-0.20%</b>	<b>4.38%</b>
<b>Spain 10yr. Bond</b>	4.91%	4.66%	<b>-0.25%</b>	<b>5.09%</b>
<b>Oil</b>	93.04	91.00	<b>-2.04</b>	<b>-2.19%</b>
<b>Gold</b>	1580.20	1481.80	<b>-98.40</b>	<b>-6.23%</b>

Domestic equities once again led the parade while gold continues to take it on the chin.

Here is where we stand year-to-date:

<b>Asset Class</b>	<b>12/31/12 Close</b>	<b>Fri. 4/12/13 Close</b>	<b>2012 Final</b>	<b>2013 YTD</b>
S&P500	1426.19	1588.85	13.41%	11.41%
DJIA	13104.00	14865.21	7.06%	13.44%
NASD	3019.51	3294.95	15.66%	9.12%
S&P600 (Small)	476.57	526.64	14.82%	10.51%
S&P400 (Mid-Cap)	1020.43	1149.23	16.07%	12.62%
Total World Stock Index	49.42	52.84	16.07%	6.92%
Emg. Mkts (VWO)	44.53	42.33	16.54%	-4.94%
Em Mkt Sm. Cap (DGS)	49.44	51.15	19.59%	3.46%
Europe (EFA)	56.86	60.43	14.80%	6.28%
China (FXI)	40.45	36.00	16.00%	-11.00%
Latin America (ILF)	43.84	43.64	2.98%	-0.46%
U.S. 10yr. Tr.	1.69%	1.72%	-0.53%	-1.78%
Spain 10yr. Bond	4.91%	4.66%	5.17%	5.09%
Oil	93.04	91.00	5.21%	-2.19%
Gold	1580.20	1481.80	6.14%	-6.23%

Emerging markets and commodities continue to badly lag our markets.

Once again, I see no reason to **not** keep the green flag flying for now. But, I continue to check my rear-view mirror several times per day!







Please follow me on Twitter @BillGunderson, Facebook, or LinkedIn throughout the week for any changes in my current stance on the market or individual stocks. My tweets are also found on my **BEST STOCKS NOW** app every day, and on the [homepage](http://www.pwstreet.com) of my website: <http://www.pwstreet.com>

### **Bill Gunderson's Model Portfolio for Investors seeking Aggressive/Moderate Growth.**

This is my most aggressive portfolio. It is designed for investors with long-term time horizons, seeking maximum growth. This portfolio is made up mainly of small and mid-cap stocks with superior growth potential.

This portfolio is up

THIS SECTION IS FOR CLIENTS AND SUBSCRIBERS ONLY

I have chosen Ensign Group (ENSG) as my featured stock of the week. I like stocks that have performance, value, and a healthy stock chart. ENSG currently has all three.

AT&T 4G 7:25 PM 86%

Rank 1-300 **ENSG-(38)**

**BEST STOCKS NOW! APP**

**Ensign Group**

Sector	Healthcare
Market Cap	774,950,000
Size	Small-Cap
Risk Profile	Aggressive

**Valuation 04/12/13**

Last Closing Price	\$35.62
Next Yr EPS Est	\$3.04
Forward PE Ratio	11.72
Est 5 Yr Annual Gr	15.00%

Best Stocks Sectors Dow Search

AT&T 4G 7:25 PM 86%

Rank 1-300 **ENSG-(38)**

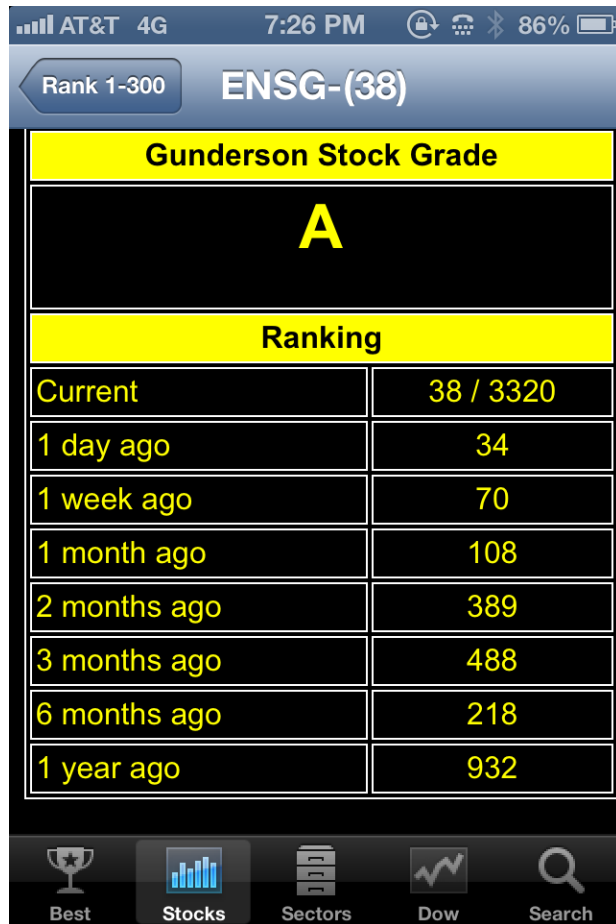
**Valuation 04/12/13**

Last Closing Price	\$35.62
Next Yr EPS Est	\$3.04
Forward PE Ratio	11.72
Est 5 Yr Annual Gr	15.00%
PEG Ratio	0.78
5 Yr Target Price	\$63.00
Dividend Yield	0.80%
5 Yr Tot Ret Pot	80.9%

**Gunderson Value Grade**

**B**

Best Stocks Sectors Dow Search



## Bill Gunderson's INCOME/GROWTH Model Portfolio

This portfolio is for investors seeking Income along with the possibility of Growth. This is a good mix for retirees who are seeking a CD alternative-albeit with greater risk. This portfolio currently has an average yield of 6.2%.

This portfolio is now up

THIS SECTION FOR CLIENTS AND SUBSCRIBERS ONLY

## Bill Gunderson's Model Portfolio for Conservative Growth Investors:

This model is made up of mostly mid-cap and large cap companies that I consider suitable for investors who have a **conservative growth risk profile**. Time horizon of at least 3-5 years would be appropriate.

This portfolio is up

THIS SECTION IS FOR CLIENTS AND SUBSCRIBERS ONLY

## 401-K Section (How is your 401k) portfolio doing?

Everyone has different choices to them in their 401-ks. The choices basically fall into about broad categories however: Large Cap, Mid-Cap, Small-Cap, Govt. Bond, Corp. Bond, Inflation Protected Bond, International, Emerging Market, and maybes sectors like technology, natural resources, etc.

I have added a number of mutual funds to my **Best Stocks Now** database that are representative of the various categories of funds that are available in most 401k plans. I grade them on a daily basis.

If you have a wide selection of mutual funds in your plan, here is my current basic recommendation: This portfolio is up

THIS SECTION IS FOR CLIENTS AND SUBSCRIBERS ONLY

## 401(k) Section (VERY BASIC)

Many folks have a very limited selection of choices in your 401-k. THIS NEW SECTION IS FOR YOU!

THIS SECTION IS FOR CLIENTS AND SUBSCRIBERS ONLY

## **Bill Gunderson's ETF Model Portfolio**

This portfolio is for investors seeking growth. This portfolio is now up

THIS SECTION IS FOR CLIENTS AND SUBSCRIBERS ONLY

### **BILL GUNDERSON WEEKLY TOP 300 LIST:**

Stocks

# Rank 1-300

**A+**

**Seattle Genetics Inc**

SGEN-(1)



**A+**

**Alaska Air Group Inc**

ALK-(2)



**A+**

**Primoris Services Corp**

PRIM-(3)



**A+**

**Howard Hughes Corp.**

HHC-(4)



**A**

**Maximus Inc**

MMS-(5)



**A**

**Aegerion Pharm.**

AEGR-(6)



**A**

**Onyx Pharmaceuticals Inc**

ONXX-(7)



**A**

**DaVita Inc**

DVA-(8)



**A**

**Tyler Technologies Inc**



Best



Stocks



Sectors



Dow



Search

This is just an appetizer, here is the full list.

THIS SECTION IS FOR CLIENTS AND SUBSCRIBERS ONLY, BUT HERE ARE 200-300

*Bill Gunderson's*

Best Stocks Now

Top 300 as of 4/12/2013

	One	Six	Three	Two	Six	One	Two	One			
	Year	Mos.	Mos.	Mos.	Mos.	Wks.	Mo.	Wks.	Wk.	Yest.	Current
	Ago	Ago	Ago	Ago	Ago	Ago	Ago	Ago	Ago	Rank	Rank
	<u>Rank</u>	<u>Rank</u>	<u>Rank</u>	<u>Rank</u>	<u>Rank</u>	<u>Rank</u>	<u>Rank</u>	<u>Rank</u>	<u>Rank</u>	<u>Rank</u>	<u>Rank</u>

A-	ACGL	Arch Capital Grp Ltd	931	412	841	626	500	537	423	483	186	<b>201</b>
A-	BSET	Bassett Furniture Inds	1319	1484	238	149	139	108	78	109	149	<b>202</b>
A-	NFLX	Netflix, Inc	823	957	18	9	162	11	62	30	187	<b>203</b>
A-	PODD	Insulet Co.	2125	1887	2750	1015	2900	1498	555	253	111	<b>204</b>
A-	YCS	Japanese Yen Inverse	0	2249	74	41	76	366	380	441	103	<b>205</b>
A-	AWH	Allied World Assurance	1615	980	1231	817	219	228	239	346	188	<b>206</b>
A-	HCI		0	0	0	0	0	0	0	0	0	<b>207</b>
A-	DISCA	Discovery Holding Co.	68	100	43	15	51	33	60	98	191	<b>208</b>
A-	ARII	American Railcar	856	201	37	21	18	17	24	34	152	<b>209</b>
A-	GMT	GATX Corp	1033	465	399	261	205	187	187	244	175	<b>210</b>
A-	HRB	H & R Block	1729	1525	583	588	325	221	297	493	168	<b>211</b>
A-	WSM	Williams-Sonoma Inc	1310	289	1247	1067	828	772	973	456	154	<b>212</b>
A-	JOBS	Fifty One Job Inc.	259	256	175	203	707	348	368	302	166	<b>213</b>
A-	AOS	Smith AO Corp	185	90	119	4	13	34	56	40	272	<b>214</b>
A-	OII	Oceaneering Intl Inc	70	580	274	39	84	154	114	107	131	<b>215</b>
A-	ACTS	Action Semiconductor	2575	2873	2352	986	761	718	447	376	202	<b>216</b>
A-	TWX	Time Warner Inc	1236	688	1306	479	408	222	171	258	233	<b>217</b>
A-	FORTY	Formula Systems Ltd ADR	531	144	1182	992	202	371	1188	474	409	<b>218</b>
A-	ASR	Grupo Aeroportuario	452	209	92	181	659	234	86	92	215	<b>219</b>
A-	SIG	Signet Group Plc	1081	495	1400	558	748	748	564	402	208	<b>220</b>
A-	ORLY	O'Reilly Automotive Inc	39	480	285	212	24	24	73	178	222	<b>221</b>
A-	LCC	US Airways Group Inc	1488	1278	127	574	196	532	193	49	226	<b>222</b>
A-	MKTAY	Makita Corp ADR	1076	940	193	1123	1515	803	887	915	72	<b>223</b>
A-	CQP	Cheniere Energy Partners	266	873	286	226	599	478	316	264	206	<b>224</b>
A-	BX	Blackstone Group	1846	1763	886	135	222	238	364	201	167	<b>225</b>
A-	CCE	Coca Cola Enterprises	478	771	906	829	312	296	333	308	182	<b>226</b>
A-	BONT	Bon Ton Stores Inc	2519	1925	645	1120	799	1434	294	311	196	<b>227</b>
A-	DORM	Dorman Products Inc	298	64	100	100	16	125	164	86	234	<b>228</b>
A-	ATHN	Athenahealth	431	299	406	224	50	74	136	105	132	<b>229</b>
A-	COO	Cooper Companies Inc	384	57	477	357	108	255	235	182	312	<b>230</b>
A-	CXW	Corrections Corp of Amer	926	1268	623	777	449	725	665	415	216	<b>231</b>
A-	MFA	M F A Financial	846	936	1026	793	1296	826	386	329	250	<b>232</b>
A-	ALGN	Align Tech Inc	95	113	805	280	66	324	254	237	220	<b>233</b>
A-	ALXN	Alexion Pharmaceuticals	3	37	172	172	846	840	389	417	221	<b>234</b>
A-	VDC	Vanguard Cons. Staples	2669	814	1410	449	517	638	751	476	308	<b>235</b>
A-	CLB	Core Laboratories NV	29	806	357	197	73	171	240	202	231	<b>237</b>
A-	EME	Emcor Grp Inc	2297	1522	430	682	297	242	407	193	212	<b>238</b>
A-	IEX	IDEX Corp	472	615	135	209	319	267	129	147	232	<b>239</b>
A-	M	Macys Inc	646	286	817	931	1106	937	893	904	217	<b>240</b>
A-	TSO	Tesoro Petroleum Corp	1663	507	1468	81	291	93	66	119	203	<b>241</b>
A-	PZZA	Papa John's International Inc	748	405	385	550	789	685	104	188	244	<b>242</b>
A-	VCLK	ValueClick Inc	738	1757	1808	1381	978	364	618	541	277	<b>243</b>
A-	TYG	Tortoise Energy Infra.	50	624	1485	251	156	102	248	138	320	<b>244</b>
A-	CBS	CBS Corp	408	608	353	55	98	119	108	126	238	<b>245</b>
A-	KMM	DWS Multi-Market Income Trust	515	233	701	310	220	782	1510	511	266	<b>246</b>
A-	TLK	Telekomunikasi Indonesia Ads	1940	785	1449	1026	1014	265	322	382	470	<b>247</b>
A-	ABT	Abbot Laboratories	1321	342	262	196	446	746	1071	1013	262	<b>249</b>
A-	KMB	Kimberly-Clark Corp	1415	1109	1832	1140	530	519	591	661	195	<b>250</b>

*Bill Gunderson's*

Best Stocks Now

Top 300 as of 4/12/2013

	One	Six	Three	Two	Six	One	Two	One	Yest.	Current
	Year Ago	Mos. Ago	Mos. Ago	Mos. Ago	Wks. Ago	Mo. Ago	Wks. Ago	Wk. Ago	Rank	Rank
	Rank	Rank	Rank	Rank	Rank	Rank	Rank	Rank	Rank	Rank



A-	TJX	TJX Co Inc	71	198	560	269	458	595	640	389	251	<b>251</b>
A-	CRAY	Cray Inc	1355	840	141	337	459	97	205	230	264	<b>252</b>
A-	TSLA	Tesla Motors	2721	2694	413	134	567	2811	2648	1757	156	<b>253</b>
A-	MHK	Mohawk Ind Inc	1437	1390	76	175	83	181	253	286	259	<b>254</b>
A-	PVD	Admin Fondos	31	1	7	311	1035	385	115	161	271	<b>255</b>
A-	UHS	Universal Health Svcs B	734	602	1087	141	327	337	272	169	185	<b>256</b>
A-	AIMC	Altra Holdings	1011	786	167	285	200	84	196	123	242	<b>257</b>
A-	AN	AutoNation Inc	700	78	415	422	61	278	309	274	380	<b>258</b>
A-	ROST	Ross Stores Inc	79	157	326	271	389	521	617	373	319	<b>259</b>
A-	HF	H F F inc.	795	1508	946	949	454	107	241	231	354	<b>260</b>
A-	AFSI	Amtrust Fin. Svcs.	171	529	35	158	71	237	79	88	355	<b>261</b>
A-	DDM	DJIA 2X Proshares	650	652	1482	349	551	779	371	410	247	<b>262</b>
A-	FXH	Strataquant Healthcare Index	0	0	0	0	0	0	0	0	295	<b>263</b>
A-	IMAX	Imax Corp	175	83	283	594	330	184	335	440	235	<b>264</b>
A-	ANAC	Anacor Pharm.	700	78	3036	2970	2997	2934	2816	1196	261	<b>265</b>
A-	MOH	Molina Healthcare Inc	217	628	2018	1818	1897	502	1064	914	424	<b>266</b>
A-	UA	Under Armour	190	184	668	490	1015	961	492	473	227	<b>267</b>
A-	NKTR	Nektar Therapeutics	2112	101	1722	1601	1360	854	527	502	292	<b>268</b>
A-	AMSF	Amerisafe	1876	987	1501	1774	656	316	199	162	246	<b>269</b>
A-	ADS	Alliance Data Systems Corp	138	160	40	118	224	133	202	235	282	<b>270</b>
A-	MPW	Medical Prop. Tr.	597	585	971	745	958	32	18	18	36	<b>271</b>
A-	CLMT	Calumet	1553	1255	323	378	20	25	64	76	296	<b>272</b>
A-	IPAR	Inter Parfums Inc	959	881	572	398	130	135	413	323	299	<b>273</b>
A-	MAT	Mattel Inc	247	326	1015	1049	753	338	470	527	198	<b>274</b>
A-	PETM	Petsmart Inc	88	107	126	549	754	399	777	801	265	<b>275</b>
A-	SAFT	Safety Insurance Grp	826	301	463	664	738	545	405	335	290	<b>276</b>
A-	SODA	Sodastream	1159	2100	174	218	465	499	778	189	205	<b>277</b>
A-	AMT	American Tower Corp	226	153	31	421	634	317	634	396	230	<b>280</b>
A-	CFX	Colfax	74	358	99	17	192	677	8	16	157	<b>281</b>
A-	OPEN	Open Table	1357	2781	1680	2673	2240	169	11	13	341	<b>282</b>
A-	IRWD	Ironwood Pharmaceuticals	0	1346	1983	1401	2446	507	200	157	163	<b>283</b>
A-	LTL	Telecommunications Sector 2x	65	450	1009	406	1507	2375	2020	2485	344	<b>284</b>
A-	VAC	Marriott Vacations Wrld	147	92	1007	206	311	553	848	266	359	<b>285</b>
A-	ACMP	Access Midstream Ptrns	1717	2219	532	451	240	287	338	370	237	<b>286</b>
A-	RRTS	Roadrunner Trans. System	0	0	2838	1901	1906	83	185	267	321	<b>287</b>
A-	IBA	Industrias Bachoco Sa de CV	1859	1558	465	969	417	284	218	191	173	<b>288</b>
A-	CNK	Cinemark Holdings	304	909	445	614	527	763	727	209	254	<b>289</b>
A-	FLO	Flowers Foods Inc	1113	1478	213	305	135	147	192	309	273	<b>290</b>
A-	WHR	Whirlpool Corp	1610	861	419	531	878	397	194	199	454	<b>291</b>
A-	EQIX	Equinix Inc	60	46	239	178	121	111	346	278	197	<b>292</b>
A-	UNS	Unisource Energy Corp	1823	932	1027	661	571	454	546	611	318	<b>293</b>
A-	ISIS	ISIS Pharmaceuticals Inc	2316	2467	2369	634	903	477	278	351	324	<b>294</b>
A-	XLV	Healthcare Sector	0	0	1563	752	868	944	660	687	357	<b>296</b>
A-	WES	Western Gas Partners	178	56	1330	1466	1253	570	482	378	390	<b>297</b>
A-	VRSK	Virtus Investment Ptrs.	1142	709	665	2	44	27	74	48	480	<b>298</b>
A-	VRSK	Verisk Analytics	0	998	697	599	1146	203	103	210	480	<b>298</b>
A-	FTI	F M C Technologies Inc	385	1022	1566	754	825	134	401	256	194	<b>299</b>
A-	NKE	Nike Inc Cl B	148	520	110	148	208	836	1204	1058	218	<b>300</b>

Bill Gunderson's Top 300 is a new feature in the newsletter. I can tell you from experience that it is very powerful. The Top 200 is a reflection of the market and the economy. These trends can remain in place for a long time. Sometimes bonds are at the top, sometimes cash is at the top, and there are even times when inverse funds rule the roost. Study this list carefully each week.

Bill Gunderson is a professional fee-based money manager. Gunderson Capital Management manages hundreds of accounts all across the country. Minimum account size is \$50,000. Annual Mgt. fees are 2% on accounts under \$250,000, 1.5%-1.75% on accounts between \$250k and \$1 million, and 1% on accounts over \$1 million. Call us for a portfolio evaluation and more info. (855)611-BEST.



My Best Stocks Now Radio Hour is heard on the Salem Broadcast Network every weekday from 7:00am to 8:00am PST. **I HAVE DISCONTINUED MY SAN DIEGO SHOW. THE STATION'S SIGNAL IS JUST TOO WEAK.** I can now be heard in Atlanta.

You can listen live to the show on the internet through the station's websites:



Seattle



Orlando



Twin Cities



San Francisco



Honolulu



Atlanta



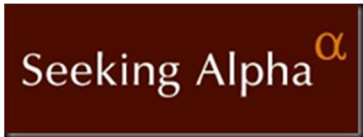
Tune-In App



Best Stocks Now App

In addition to this we will also download the shows to the radio archives on my website <http://pwstreet.com> and send them to iTunes. There is no excuse to not keep up on your investments!

Bill Gunderson is also columnist for *The Street.com*, *MarketWatch.com*, and *SeekingAlpha.com*.



I did not write any articles this past week for *MarketWatch*, *TheStreet.com*, or *Seeking Alpha*. You can see my recent articles for the *TheStreet* by clicking [here](#)

To see my recent articles for *MarketWatch* click [here](#)

Watch for Bill Gunderson on:



Here are snippets on all of the stocks I have talked about on my radio show, and articles that I have written over the last few months. They are in alphabetical order.

<http://pwstreet.com/good-bad-stocks/>

MORTGAGE RATES remain at all-time lows. "Craig Brock, our local mortgage expert and bond market commentator on *Positively Wall Street* is actually closing HARP-2 loans for people (while many banks are hopelessly backlogged). Are you under water on your property? These new rules are helping folks who may not have otherwise qualified for a new loan at these historic low rates!

Talk to Craig! (855) 900-EASY"

To order my book, Best Stocks Now, click the link below:

<http://pwstreet.com/book/>

To set up and appointment with me, click the link below:

<http://pwstreet.com/contact-us/>

Subscriptions to this weekly newsletter are \$195 per year or \$60 per quarter. To subscribe call us at (855)611-BEST or visit our website at <http://pwstreet.com>. You can also mail a check to Gunderson Capital Mgt. 101 W.Broadway #1975 San Diego, CA 92101

THIS REPORT PROVIDES GENERAL INFORMATION AND IS NOT AN OFFER TO BUY OR SELL ANY SECURITY. IT IS THE SOLE OPINION OF THE WRITER, BILL GUNDERSON. BILL GUNDERSON IS PRESIDENT OF GUNDERSON CAPITAL MANAGEMENT INC. A REGISTERED INVESTMENT ADVISORY FIRM LOCATED AT 101 W. Broadway #1975, San Diego, CALIFORNIA PHONE NO. (855)611-BEST. BILL GUNDERSON EDITS THE WEEKLY NEWSLETTER. INFORMATION IN THIS NEWSLETTER COMES FROM INDEPENDENT SOURCES BELIEVED TO BE RELIABLE, BUT ACCURACY IS NOT GUARANTEED. BILL GUNDERSON OR GUNDERSON CAPITAL MGT. INC. HAS NOT VERIFIED THE ACCURACY OF THE INFORMATION PUBLISHED BY THE INDEPENDENT SOURCES. SELECTIONS IN THIS NEWSLETTER ARE THE SOLE OPINIONS OF BILL GUNDERSON AND ARE SUBJECT TO RISKS AND UNCERTAINTIES BEYOND THE CONTROL OF BILL GUNDERSON AND GUNDERSON CAPITAL MGT. INC. SUCH RISKS AND UNCERTAINTIES INCLUDE NATIONAL, INTERNATIONAL, ECONOMIC CONDITIONS AND FLUCTUATIONS; ECONOMIC CONDITIONS OF SPECIFIC SECTORS AND GROUPS AND COMPANIES; MANAGEMENT CAPABILITIES OF COMPANIES SELECTED. SELECTIONS IN THIS NEWSLETTER MAY NOT YIELD PROFITABLE RESULTS AND MAY ACTUALLY RESULT IN A LOSS OF INVESTMENT CAPITAL. AS AN INVESTMENT ADVISOR, BILL GUNDERSON, OR CLIENTS OF GUNDERSON CAPITAL MGT. INC. MAY PURCHASE AND SELL SECURITIES IDENTIFIED EITHER IN THEIR OWN ACCOUNTS OR ACCOUNTS THAT THEY MANAGE. THEY MAY ALSO BUY OR SELL SECURITIES MENTIONED WITHOUT NOTICE TO NEWSLETTER SUBSCRIBERS. IF YOU HAVE ANY QUESTIONS, YOU CAN CONTACT BILL GUNDERSON AT (855)611-BEST

<http://www.pwstreet.com>

**@BillGunderson on Twitter**

[Bill@pwstreet.com](mailto:Bill@pwstreet.com) *Let me hear from you!*

